



Sage Abra HRMS
Employee Management Software
Newsletter



CMS NEWSLETTER

SPRING 2007



SAGE ABRA

CMS FYI

Visit CMS online any time for Abra news, webinars, and our regularly updated Abra Blog.
www.cmshris.com

SAGE PAYROLL SERVICES: *Payroll Your Way*

Choose Payroll Your Way

Would you like to have all of your HR and payroll information in one place? What if we told you that you could have in-house or outsourced payroll processing from Sage Abra with seamless integration to your existing Sage Abra HR software?

Sage Abra has two, unique solutions with efficient automation and streamlined processes, all with the familiar Sage Abra user interface. Sage Abra Payroll and Sage Payroll Services - Abra Edition are both top-rated by CPA Technology Advisor.

If you need the security and control of in-house payroll processing, then, it's time for Sage Abra Payroll.

This easy-to-use package automates and simplifies the



entire payroll process, so you can easily process payroll for your employees with no worries.

If you want the convenience of outsourced payroll processing? Then, outsource your payroll with Sage Payroll Services – Abra Edition. This efficient solution to payroll processing is ideal for businesses with limited staff, and smaller payroll teams.

Sage Abra Payroll *In-house payroll processing.* Get easy, accurate and secure in-house payroll preparation that can be customized to meet virtually any business need. Use intuitive reporting capabilities and efficient, streamlined processes for high-level business insights:

- Ensure accurate and timely processing, and complete data control. (Continues on Page 3)

INSIDE THIS ISSUE:

Introducing The All New iRecruit 8.1	2
Work Opportunity Tax Credit Saves On New Hires	2
Sage Payroll Services: Payroll Your Way	3
Upcoming Sage Abra Webcasts	4



Sage Abra HRMS

Leaders Quadrant in 2006 U.S. Mid-market HRMS Magic Quadrant

INTRODUCING THE ALL-NEW IRECRUIT 8.1

CMS is about to launch the new version 8.1 of iRecruit.

iRecruit is a hosted recruiting solution designed to give small to medium sized businesses an affordable, simple way to handle the recruiting process online.

The Simple Solution iRecruit is designed to work in conjunction with your website and can also integrate with

Sage Abra Recruiting Solution.

iRecruit gives your company an easy-to-manage career center and full administrative control. It's simple, with one URL connection you're ready to start receiving applicants online!

iRecruit provides your company with it's own Career Center that allows applicants

to select the position they're interested in, and apply online.

The iRecruit Career Center Administration area allows you to do the following:

Easily set up and administer your site. Set up new job openings, customize your application form, track your applicants, and reporting. (Continues on Page 2)



Authorized Partner
Select

INTRODUCING THE ALL-NEW IRECRUIT 8.1

Customize the text areas and questions on the application form.

Create two custom response messages to your applicant, one they see immediately when they submit an application, and the second, an email confirmation.

Search for applicants. Search by keyword in both the application submitted and attached resume.

Forward application and resume to hiring manager.

Customize the application form. You can even ask up to 40 custom questions.

Make questions required in order for

the applicant to complete the application. Make as many questions required as you need.

Accept resumes from your applicant and perform keyword searches.

Forward the application and resume to your hiring manager from the career center administration area.

Send your applicants custom automatic confirmation emails thanking them for their application.

Send your Human Resources Recruiter automatic notifications of new applicants.

Easily track skills information, education, work history and

affirmative action questions.

Add unlimited job postings, that can be posted 24/7.

Integrate iRecruit with Sage Abra HRMS or other HR Management Solutions.

128-bit SSL Encryption protects private and confidential data on the internet.

Link to Monster.com, Hotjobs.com, CareerBuilder.com and more!

iRecruit 8.1 will be available in early Spring 2007.

For a demonstration at your convenience, please call Linzi at 860-678-4401.

Work opportunity tax credits (WOTC)

In December 2006 the U.S. Congress passed legislation reinstating the Federal Work Opportunity ("WOTC") and Welfare to Work ("WtW") tax credits retroactively to January 1, 2006, when these tax credits went into hiatus. The legislation, reinstates the WOTC and WtW tax credit programs through December 31, 2007 and, beginning January 1, 2007, expands eligibility for the WOTC tax credit, including extending the age for food stamp recipients from 25 to 40 and removing the ceiling on family income for ex-felons.

The Work Opportunity Tax Credit program is designed to give employers an incentive to hire welfare-to-work employees. By taking advantage of the CMS WOTC program you can save up to \$3,500 per new hire the first year, and up to \$5,000 during the second year of employment.

We do all the work for you

Get a bonus for your company, while helping others. CMS will provide your organization with the tools to

maximize the WOTC tax incentives. In addition CMS provides the following benefits:

- CMS identifies eligible employees.
- CMS understands all the Federal and State guidelines for your company to obtain eligible tax credits.
- CMS handles all the administrative duties necessary to obtain WOTC in your state.
- CMS protects your organization from asking the sensitive questions necessary to obtain the WOTC tax credits.

Who is Eligible?

- Aid to Families with Dependent Children (AFDC) / Temporary Assistance to Needy Families (TANF)
- Ex-Felons
- Food Stamps Recipient
- High-Risk Youth
- Summer Youth Employee
- Supplemental Security Income (SSI) recipient



- Veterans

All you need to do is count your savings!

"We have been using CMS' tax credit program for over five years now, and the results have been excellent, saving us over \$100,000 over all our corporations. I would strongly recommend using CMS' Tax Credit Program."

- Rich McCarthy, Great American

For more information on **WOTC** including a potential savings calculator, please visit:
www.cmshris.com

Or call CMS directly at
800-517-9099.

Sage Payroll Services (Continued)

(Continued from page 1)

- Access powerful tools for government compliance and management reporting.
- Including Crystal Reports®, ad-hoc reporting and over 100 standard reports and forms.
- Enjoy payroll processing that's flexible enough to handle last-minute changes and printed paychecks on-demand.
- Manage payroll taxes and reporting through automatic quarterly federal, state, and local tax table updates; EFTPS support; and media reporting for all states (optional tax filing service also available).
- Support direct deposit, custom pay stubs, and unlimited earning and deduction codes.
- Create maximum security of sensitive data with user IDs, passwords, and audit trails.

Sage Payroll Services – Abra Edition *Outsourced payroll*

With hassle-free paydays, flexibility and convenience, and a reduced risk of tax penalties, you are sure to win. A true, web-native application, Sage Payroll Services – Abra Edition lets you run payroll on-demand and instantly access reports with information available 24/7 from any computer:

- Benefit from Internet accessibility and real-time reporting from any location at any time.
- Work with an experienced CPP payroll specialist to process your payroll.
- Use multi-level security with encryption and password protection.
- Get total tax preparation, filing, payment, and compliance for all tax regulations.
- Eliminate IRS penalties with a penalty-free guarantee.

SAGE PAYROLL SOLUTIONS COMPARISON CHART		
Payroll Solution	Full-Service Payroll	In-house Payroll with Payroll Tax Update Service
Payroll data integrated and/or stored in Sage Software payroll products	✓	✓
Payroll data entry and access.	Online (24x7)	In Sage Payroll Solutions
Direct deposit of paychecks	✓	✓
Print paychecks from your desktop	✓	✓
Updated federal and state tax tables	Online (24x7)	In Sage Payroll Solutions
Updated formats for tax-related forms (W2, W3, 941, etc).	✓	✓
Updated local tax tables	✓	✓
W-2 processing service	✓	
"Penalty-free" guarantee	✓	
Automatic federal, state, and local payroll tax deposits	✓	
Automatic payroll tax filings to federal, state, and local authorities	✓	
Check stuffing and Printing	✓	
Delivery service	✓	
State new hire reporting service	✓	

- Take advantage of new hire reporting, W-2 and 1099 printing and delivery, and W-2 electronic filing.

Sage Payroll Services Webcast - Outsourced Payroll for Your Sage Software Solution Attend this webcast to see how Sage Payroll Services can save you valuable time and resources with its integrated, outsourced payroll solution.

April 12, 2007, 2 pm - 3 pm ET
 April 20, 2007, 2 pm - 3 pm ET

To register please call Linzi at 860-678-4401 or visit our website: www.cmshris.com/abrawebinars.html



CMS WELCOMES NEW CUSTOMERS!



Automotive Technologies, Inc.
 Middletown, CT

Colt's Plastics Company, Dayville, CT

MedExcel USA, Inc.,
 New Windsor, NY

Nursing & Home Care, Inc.,
 Wilton, CT

Pawtuxet Valley Prescription & Surgical Center, Coventry, RI

Thank you for choosing CMS!

UPCOMING SAGE ABRA WEBCASTS

Boost your productivity and software knowledge by taking advantage of these upcoming Sage Abra HRMS webinars.

Sage Abra HRMS - Talent Management Solution (current customers)

Learn how to manage all your HR functions in one place. From recruiting to organizational structure to training...you can do it all with one solution – Sage Abra Talent Management solution.

April 25, 2007, 2 pm - 3 pm ET
May 24, 2007, 2 pm - 3 pm ET
June 20, 2007, 2 pm - 3 pm ET

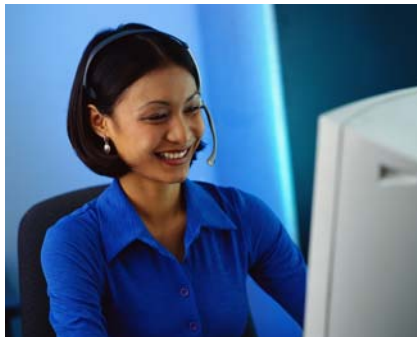
Sage Abra HRMS - Online Workforce Solution (current customers)

Bring all your HR online and learn how to go paperless with Sage Abra.

April 24, 2007, 2 pm - 3 pm ET
May 23, 2007, 2 pm - 3 pm ET
June 19, 2007, 2 pm - 3 pm ET

Sage Abra HRMS - Benefits Management Solution (current customers)

Learn how to securely automate employee benefits data and benefits/insurance carrier communications the fully integrated, end-to-end benefits management capabilities of Sage Abra.



April, 23, 2007, 2 pm -3 pm ET
May 22, 2007, 2 pm - 3 pm ET
June 18, 2007, 2 pm - 3 pm ET

Payroll and Tax Compliance Solutions - Evaluating your Options

“There is no “one size fits all” solution to your payroll management needs. Whether you want the control of in-house software, or the convenience of outsourcing, you need to make informed decisions on what best suits your company’s needs. You need “payroll your way.”

April 6, 2007, 2 pm - 3 pm ET
June 8, 2007, 2 pm - 43 pm ET

Sage Abra Lattes-Lunch-n-Learn Applicant Tracking Systems The First Step Towards Effective Talent Management and Compliance

Learn the talent management and

compliance tips and tricks from a noted industry expert. Attend this educational Webcast to find out more...and receive a **FREE Starbucks card!**

April 11, 2007, 2 pm - 3 pm ET

Sage Abra Lattes-Lunch-n-Learn – Mining HR Data – Keys to your HR Success!

Learn the HR/Payroll reporting tips and data mining tricks from a Sage Abra expert. Attend this educational Webcast to find out more...and receive a **FREE Starbucks card!**

June 26, 2007, 2 pm - 3 pm ET

Sage Abra Productivity Solution (current customers)

Automatic email notification, changing menus and importing data can take Abra HRMS and become a virtual HR Assistant. Sage Abra Productivity Solution takes Abra HRMS to that next level with Sage Abra Alerts, Sage Abra Toolkit, and Sage Abra Link.

April 26, 2007, 2 pm - 3 pm ET
May 25, 2007, 2 pm - 3 pm ET

To register for any of these webcasts, please call Linzi at 860-678-4401 or visit our website: www.cmshris.com



SAGE ABRA HRMS

“Employee Management Software”

321 Main Street, Farmington, CT 06032

860-678-4401

www.cmshris.com